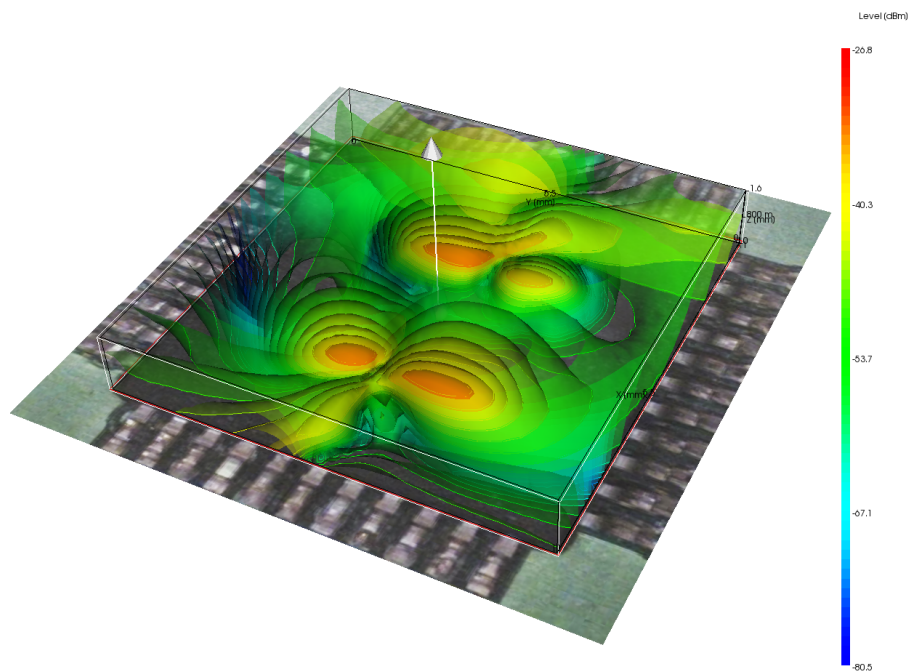


Software manual
ChipScan-Scanner 4.0



Notice No part of this manual may be reproduced in any form or by any means (including electronic storage and retrieval or translation into a foreign language) without prior agreement and written consent from Langer EMV-Technik GmbH. The management of Langer EMV-Technik GmbH assumes no liability for damages which may result from the use of this printed information.

Contents

Overview	1
1. System requirements and installation	3
1.1. System requirements	3
1.2. Installation	4
2. Getting Started	6
2.1. Quick introduction into ChipScan-Scanner	6
2.2. Viewing of surface and volume emission scans	6
2.3. Single trace analysis	7
2.4. Acquiring single traces and emission scans	8
2.4.1. Single traces	8
2.4.2. Emission scans	9
2.5. Exporting data and images	10
3. Graphical user interface	11
3.1. Main menu	11
3.2. Visualization	13
3.2.1. Emission scans	13
3.2.2. Single traces	16
3.3. Data set manager	17
3.4. Device control	18
3.4.1. Spectrum analyzer setup	18
3.4.2. Spectrum analyzer normalization	19
3.4.3. Single trace acquisition and processing	19
3.4.4. Scanner movement	20
3.4.5. Video device usage	21
3.5. Trace manager	21
3.5.1. Manipulation of trace properties	22
3.5.2. Manipulation of trace data	22
3.6. Log	23
4. Managing devices	24
4.1. Device detection	24
4.1.1. Device Interfaces	24
4.1.2. Manual detection	25
4.1.3. Last setup	25
4.2. Device selection for measurement	25
4.3. Identifying device communication problems	25
5. Acquisition and management of emission scans	27
5.1. Scan setups	27
5.1.1. General information	28

5.1.2. Volume information	29
5.1.3. Movement strategy	29
5.1.4. Actions	29
5.2. Emission Scan Acquisition	30
5.3. After emission scan acquisition	30
6. Frequently asked questions	31
6.1. Windows 7 and artifacts within the visualization	31
6.2. Langer ICS 105 is not detected in device manager	31
Appendix	32
A. Supported spectrum analyzers	32

Overview

ChipScan-Scanner is an evaluation software designed for reliable acquisition, fast interactive visualization and sophisticated analysis of electromagnetic compatibility (EMC) measurements of components. In combination with a Langer IC-Scanner and one of Langer's ICR microprobes, ChipScan-Scanner is a versatile tool for measuring high-frequency magnetic or electric fields up to 6 GHz of integrated circuits, PCBs and even complete products.

ChipScan-Scanner key features

- **Reliable configuration and measurement of emission scans**

ChipScan-Scanner allows the quick configuration and reliable execution of surface emission scans using one of Langer's IC-Scanners. Additional to common surface scans ChipScan-Scanner supports scanning a specific volume over a DUT. So not only you gather information of the electric and magnetic fields at the DUT's surface but you gain information about the 3D distribution of the fields in the proximity of the DUT, too.

All settings of a scan including the used spectrum analyzer¹ are automatically stored in a protocol for later use. Thus future measurements with identical properties are achieved easily without any fault.

- **Fast visualization of scans for evaluation of near field emissions**

Depending on scan type, ChipScan-Scanner enables you to visualize and manipulate up to 300,000 measurement points² in real-time, which is essential for high-resolution EMC scans. Furthermore, ChipScan-Scanner is not limited to create a surface or volume plot for specific frequencies. You can also generate plots containing the maxima of the field intensities for freely definable frequency bands. As well you can visualize isosurfaces of the field intensities. Thus DUT's interference processes can be systematically understood and thoroughly analyzed.

- **Sophisticated processing of emission scans**

ChipScan-Scanner provides some important processing features to make an exact and detailed analysis of near field emissions even easier. You can subtract a reference measurement of your DUT from any subsequent scan of the very same or a different DUT. So locating and documenting the outcome of changes in a devices' design process can be achieved very quickly. This method is very useful to automatically verify near field emissions throughout your production, too.

Furthermore the traces of all measurement points can be compared to each other or can be compared with traces of other measurements which allows a detailed frequency based analysis of the near field.

¹See appendix A for a list of supported devices.

²Each measurement point consists of a spectrum analyzer trace with 1,000 data points.

- **Image and data export for documentation, statistical analysis, etc.**

All rendered images can be easily exported in various image formats. Thus you can easily generate any needed documentation or presentation of your work regarding a specific EMC problem. Additionally ChipScan-Scanner can export all traces of a specific emission scan to a comma separated value list (.csv) for further statistical analysis with tools like R, Matlab or Excel.

- **Reliable storage of emission scans for future usage**

You can store all scans to continue your evaluation at a later stage, allowing an evaluation independent from the measurement of an emission scan. This can be especially useful for specific protocols when different people are responsible for acquisition and evaluation.

Support

Our software team provides uncomplicated support in case of problems, questions or requests concerning ChipScan-Scanner. Please contact us by writing to software@langer-emv.com. You may check our website <https://www.langer-emv.com> from time to time for new releases of ChipScan-Scanner, too.

If you have any feature or custom development request that should be implemented immediately please contact our sales team using the following email address mail@langer-emv.com.

1. System requirements and installation

1.1. System requirements

Your computer system should have at least the following properties.

- 1 GB HD space
- Windows[®] 7/10 (latest service packs)
- Monitor with a display resolution of 1280x1024 or greater
- Free USB port for installation
- Spectrum analyzer¹ (for trace acquisition only)
- NI-VISA at least Version 18.5 Runtime Edition²

The minimum memory requirements strongly depend on the number and the size of the loaded emission scans, whereas the minimum CPU and GPU requirements strongly depend on the size of the displayed emission scan.

Because of these circumstances we just provide a recommended setup for RAM, CPU and GPU. This setup is able to load at least three emission scans each consisting of 100,000 measurement points³, and to visualize and to manipulate them in real-time.

- 8 GB of RAM
- CPU Intel Core i7 2.7 GHz
- GPU AMD Radeon 7950 with 3 GB of GDDR5 memory

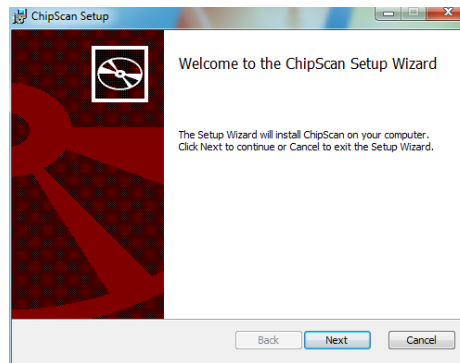
¹See appendix A for a list of supported devices.

²NI-VISA can be downloaded e.g., under the following link: www.ni.com/en/support/downloads/drivers/download.ni-visa.html Although the Runtime version is sufficient, the NI-VISA Full version can also be used.

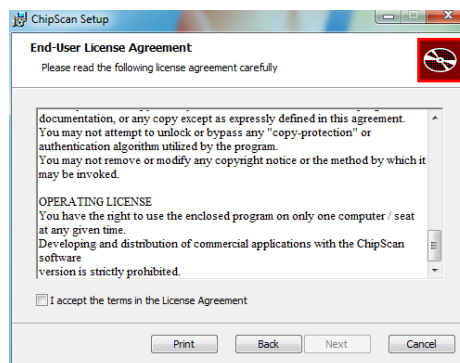
³Each measurement point consists of a spectrum analyzer trace with 1,000 data points.

1.2. Installation

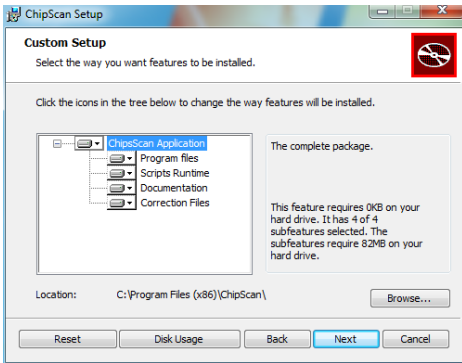
1. Connect the ChipScan-Scanner installation medium (USB memory stick) to the computer.
2. Change to the directory *ChipScan-Scanner* on the installation medium.
3. Double click *ChipScan-Scanner.exe*.



4. Please read the license agreement carefully. If you accept it, you can go on.



5. Select the location where ChipScan-Scanner will be installed.
6. Finish installation.



2. Getting Started

2.1. Quick introduction into ChipScan-Scanner

For users who want to get started immediately here is a quick introduction to ChipScan-Scanner. The example data files used in this tutorial can be found in the DATA directory in your ChipScan-Scanner distribution or can be downloaded from our website <http://www.langer-emv.com/chipscan>.

Start ChipScan-Scanner by clicking the ChipScan icon on your desktop or in the Application menu. ChipScan-Scanner will start up with the main window entitled ChipScan-Scanner (see fig. 2.1).

The main window allows the viewing of six different dock windows: the visualization which is always visible, the data set manager, the device control, the trace manager, the scan manager and the log. If you closed any of these windows you can make them visible by selecting the appropriate menu item in the WINDOW menu.


2.2. Viewing of surface and volume emission scans

To open an emission scan file select OPEN... in the FILE menu. Navigate in the file dialog to the directory where the example data files are located and mark the desired file with a single (left) mouse click. Pressing the OPEN button opens the file. With the default dock window settings you see the visualization in the center displaying the emission scan, the device control on the right next to it and the data set manager on the bottom (see fig. 2.1). In the following we only present a small overview of the visualization features, see section 3.2 for further details.

In the upper part of the visualization all measurement points of the emission scan are shown for a specific frequency within the acquired frequency range. Each point has a specific color that maps to a corresponding value in the color bar on the right. Adding or removing any additional information like isosurfaces or an image of your DUT can be achieved via the buttons on the left next to the visualization. Use the slider on the bottom of the visualization to switch between frequencies and display the appropriate information.

In addition to viewing specific information of your emission scan you can navigate within the scan, too. To rotate the emission scan in any direction around the center of the scene move the mouse over the visualization while holding down the left mouse key. You may additionally hold down the CTRL key to rotate the scan around the projection axis only. Holding down the SHIFT key instead will move the scan along the projection plane. You can zoom in/out of the scan by spinning the scroll wheel. When moving the mouse pointer over a specific measurement point of the emission scan you will see the specific trace of this point in a Cartesian coordinate system below.

Furthermore you can adjust several properties of the emission scan visualization to satisfy your specific needs. For example you can change the transparency of the isocontours or set the position and size of the DUT image in the scene. To do this press

the  button on the right next to the scan visualization. In the subsequent dialog all properties are grouped into different categories and therefore can be easily found and altered.

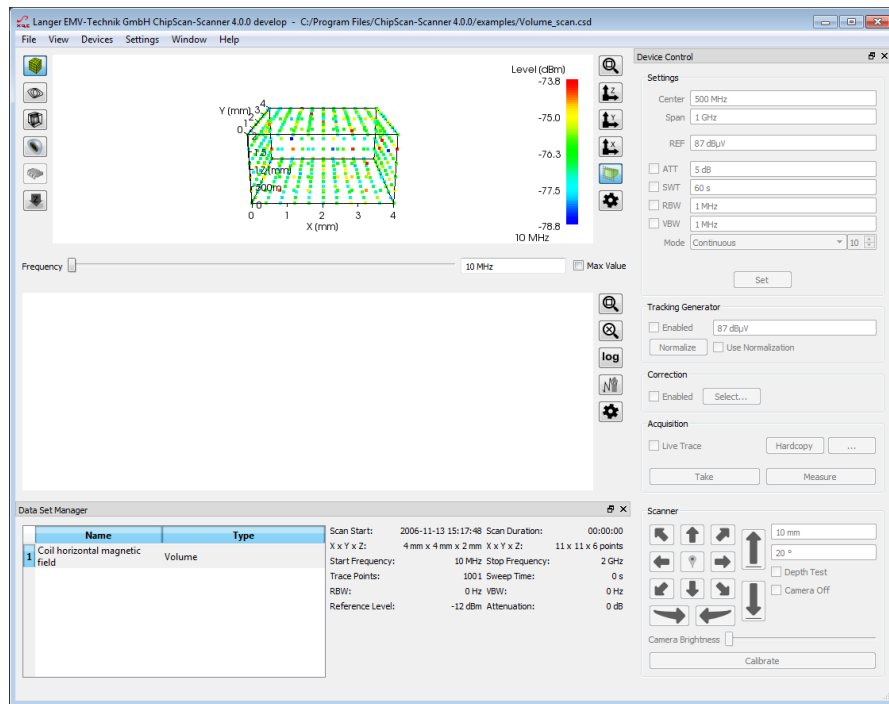



Figure 2.1.: Main window of ChipScan-Scanner

2.3. Single trace analysis

As was pointed out in section 2.2, you can view the trace of any measurement point in the lower part of the visualization, by moving the mouse pointer over it. To add any trace permanently do a right mouse click on the appropriate measurement point and select ADD TO TRACE VISUALIZATION from the subsequent context menu. In this way you can easily compare the trace of any points of the emission scan against one another and even against a separate reference.

To better keep track of different traces within the visualization you can manage a trace's properties like visibility and color via the trace manager. To open it press CTRL+T or select the TRACE MANAGER entry from the WINDOW menu.

In addition you have multiple navigation options in the trace visualization to analyze specific trace frequencies in detail. You can center a point of interest in the traces by moving the mouse while holding down the left mouse key over the visualization. You can zoom in/out of the traces by spinning the scroll wheel. While spinning you may also hold down the SHIFT or the CTRL key to zoom along the x- or y-axis only. Moving the mouse pointer over a data point of a trace will display the specific values for x/y-axis including the unit. To recover the full view range of all visible traces press the  button on the right next to the trace visualization.

2.4. Acquiring single traces and emission scans

To acquire emission scans using ChipScan-Scanner it is required that you connect a spectrum analyzer¹ and one of Langer's IC-Scanners to your PC. Make sure both devices are properly connected. Furthermore, to eliminate any connection problems regarding your spectrum analyzer you may verify your setup with a software provided by the spectrum analyzer manufacturer.

Before starting the data acquisition you must detect both the spectrum analyzer and the Langer's IC-Scanner that are connected to your PC. To do so select **DEVICE MANAGER** from the **DEVICES** menu. In the subsequent device manager dialog (see fig. 2.2) select the interface your spectrum analyzer is connected to and press the **DETECT DEVICES** button. All connected devices, which have been automatically identified, will be shown in the **IDENTIFIED DEVICES USED FOR MEASUREMENT** section of the dialog. Make sure to select your connected spectrum analyzer from the list of identified devices. If your spectrum analyzer could not be automatically identified please redo the aforementioned connection test. If it does not succeed please see section 4 for a detailed description of the device manager and its capabilities before contacting our support.

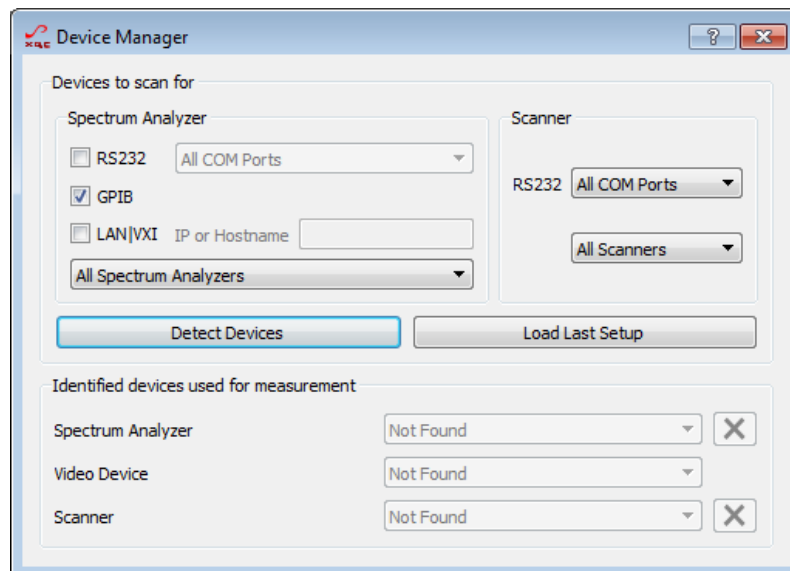


Figure 2.2.: Device manager of ChipScan-Scanner

2.4.1. Single traces

After identifying the connected spectrum analyzer you can change all important properties like frequency range, reference level, etc. of the spectrum analyzer via the device control (see fig. 2.1). To finally set the properties press the **SET** button. This will transfer all settings to the spectrum analyzer. If your spectrum analyzer includes a supported tracking generator you may configure it, too. When finished you can acquire a trace by pressing the **MEASURE** or **TAKE** button. The trace will be shown in the visualization. The visibility and other properties of any single trace can be altered via the trace manager.

¹See appendix A for a list of supported devices.

2.4.2. Emission scans



Attention: Any of the following steps for scanner control may cause damage to any equipment and serious injuries or death to persons within the motion range of the scanner. Please proceed with caution while keeping all safety measures.

Before you start to work with the identified IC-Scanner you must initiate a calibration routine by pressing the CALIBRATE button in the scanner section of the device control. This will initialize the scanner and move all axes to their zero-point position.² Afterwards the ICR microprobe can be moved and rotated by setting the motion distance and rotation angle, and pressing the arrow buttons. If the probe is finally positioned at the start point of your measurement you need to activate the scan manager to acquire an emission scan.

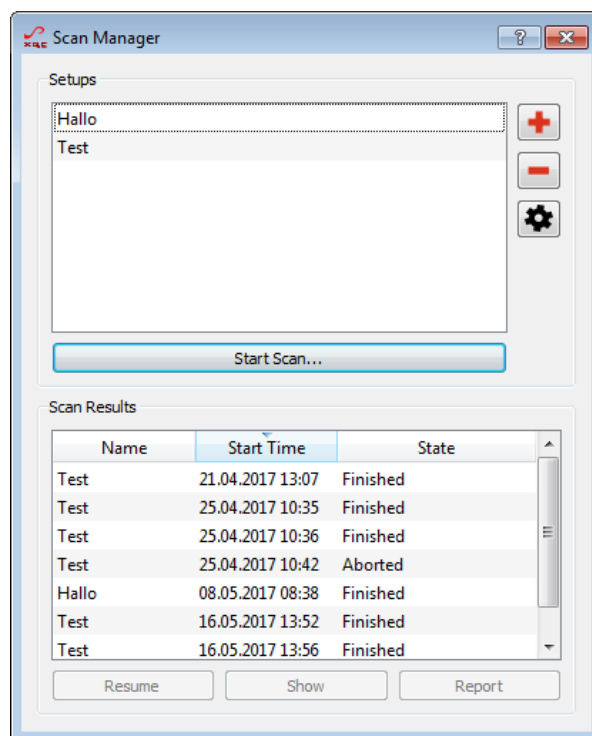


Figure 2.3.: Scan manager of ChipScan-Scanner

To activate the scan manager select the SCAN MANAGER entry from the WINDOW menu. In the scan manager (see fig. 2.3) you need to create a new scan setup by pressing the + button. You are presented with a configuration dialog for the setup. Among other settings you can specify the dimensions of the volume you want to scan. You can leave the preset settings³ and press the OK button of the dialog to return to the scan manager.

After the new scan setup is created you need to press the START SCAN... button in the scan manager. This will initialize the visualization of ChipScan-Scanner and start the scan. During the execution of the scan a progress dialog shows the remaining time amongst other things and the visualization of ChipScan-Scanner is updated, too.

²See the additionally provided scanner manual to determine this position.

³Make sure the scanner can move the probe 10 mm in x-,y- and z-direction.

After the scan is finished you may view the appropriate report by selecting the scan in the SCAN RESULTS section of the SCAN MANAGER and pressing the REPORT button. To further analyze your emission scan data close the scan manager and follow the description in section [2.2](#).

2.5. Exporting data and images

Beside saving of acquired emission scans you can also export all of one's traces. This is especially important for further analysis with statistical software like R or Matlab. To do so select EXPORT DATA... from the FILE menu and specify the file in the subsequent file dialog where the data should be saved to. The resulting file (.csv) will contain a comma separated value list of all traces currently available in the data manager.

Furthermore you may want to export the image of the current visualization for purposes like presentation or documentation. To do so select EXPORT SCAN IMAGE... or EXPORT TRACES IMAGE... from the FILE menu and a file dialog will open. There select a filename and an image type to finally save the image in a file.

3. Graphical user interface

The layout of the graphical user interface of ChipScan-Scanner is partly configurable to meet your demands during different tasks. It uses a dock window system, which allows to rearrange some windows of the graphical user interface within the main window. Apart from the visualization there are four main dock windows, the data set manager, the device control, the trace manager and the log. The visibility of each window can be set in the WINDOW menu by selecting the appropriate entry.

To undock any windows move the mouse pointer over the upper frame of a docked window, press and hold down the left mouse button and drag the window to the desired position (see fig. 3.1). ChipScan-Scanner will rearrange the main window in order to fit everything into it, thus all other docked windows will fill out the available space automatically. Using the undock option can be very helpful to gain more space for the visualization on small monitors.

Additionally you can hide any docked or undocked windows by pressing the X symbol in the upper window frame. This option is especially useful if for example you evaluate your measured traces. During this task you would not need the device control at all. To show any hidden dock windows you need to select the appropriate entry from the WINDOW menu.

You can also dock all undocked windows but the trace manager and the log back to the main window. Be aware that the possible dock position varies from window to window. The device control can only be docked to the right side and the data set manager can only be docked to the bottom of the main window. To do so move the mouse pointer over the upper frame of the undocked window, press and hold down the left mouse button and drag the window over the main window. If the window floats over an allowed dock position, the window's resulting position will be automatically indicated with a shaded area.

3.1. Main menu

The main menu consists of a number of drop down menus containing specific important functions. The FILE menu contains all actions regarding files, the VIEW menu holds all actions to manipulate the visualization, the DEVICES menu incorporates actions to manage devices, the SETTINGS menu includes actions for spectrum analyzer settings and the WINDOW menu contains actions to manage the dock windows. In the following all menus and their functions are listed.

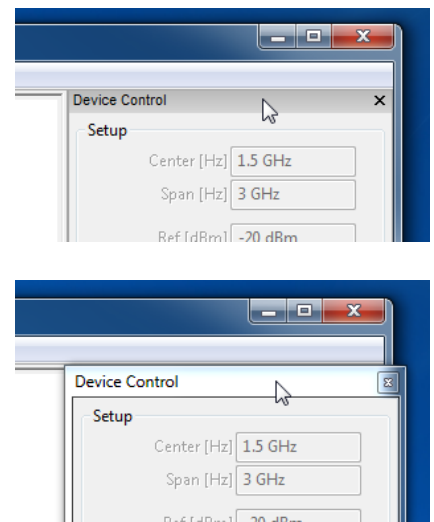


Figure 3.1.: Undocking windows

File menu

New	Discards all traces and scans, and creates an empty file
Open...	Discards all traces and scans, and loads traces and scans from a specified file
Recent Files	Shows a list of recently loaded files
Save...	Saves traces and scans to the current opened file
Save as...	Saves traces and scans to a specified file
Import Data Set...	Appends scans in a specified file to the current scans
Import DUT Image...	Imports an image to the currently displayed volume data set
Export Scan Image...	Saves an image generated from the scan visualization to a specified file
Export Traces Image...	Saves an image generated from the traces visualization to a specified file
Export data...	Saves all traces of visualized scan as comma separated value list to a specified file
Exit	Closes ChipScan-Scanner

View menu

Scan	Shows scan visualization only
Traces	Shows trace visualization only
Scan and Traces	Shows both scan and trace visualization
Logarithmic Level Values	Switch between logarithmic and linear level values

Devices menu

Device Manager...	Opens the device manager
Video...	Opens the video dialog
Detect Recently Found Devices	Scans for recently used devices

Settings menu

Spectrum Analyzer	
Center/Span	Uses center and span to set frequency range
Start/Stop	Uses start and stop frequency to set frequency range
Auto Set	Transfers settings to spectrum analyzer before any measure or take
Auto Save	Saves all traces to current opened file whenever a trace is measured
Absolute measurement	Acquires an absolute measurement during take or measure

Relative measurement	Acquires a relative measurement during take or measure
dB/Division	Sets the dB per division of the spectrum analyzer
Preset	Resets all settings of the spectrum analyzer to their defaults
Load Settings...	Loads previous saved settings from a specified file
Save Settings...	Saves current settings to a specified file
Unit	Sets the level unit of the spectrum analyzer to either dBm or dB μ V

Window menu

Data Set Manager	Shows the data set manager
Device Control	Shows the device control
Scan Manager	Shows the scan manager
Trace Manager	Shows the trace manager
Log	Shows the log

Help menu

About...	Shows an about dialog
Manual...	Opens the ChipScan-Scanner manual

3.2. Visualization

The visualization consists of two main parts. One part allows the evaluation and comparison of emission scans and the other enables you to further analyze single traces of these scans.

3.2.1. Emission scans

Due to geometry reasons the display of emission scans itself is separated into two independent visualizations; the surface/volume scan visualization and the pin/stripline scan visualization. While surface and volume scans span a 2- or 3-dimensional grid of measurement points, pin and stripline scans consists of points measured along an 1-dimensional line.

Surface and volume scans

For a specific frequency within the acquired frequency range all measured points are shown in a Cartesian grid (see fig. 3.2). The x-, y-, z-location of every point matches the scanner's position during measurement. Each point has a specific color that maps to a corresponding level value in the color bar on the right. You can switch between the acquired frequencies by moving the slider or entering a frequency value in the input field below the visualization.

You are not limited to display only one frequency. You can also generate a plot for freely definable frequency bands. So each measurement point displays the highest level value within the band, which is really helpful to analyze multi frequency EMC problems. To enable this mode you need to check the MAX VALUE box below the visualization, afterwards you can specify the lower and the upper frequency of the frequency band.

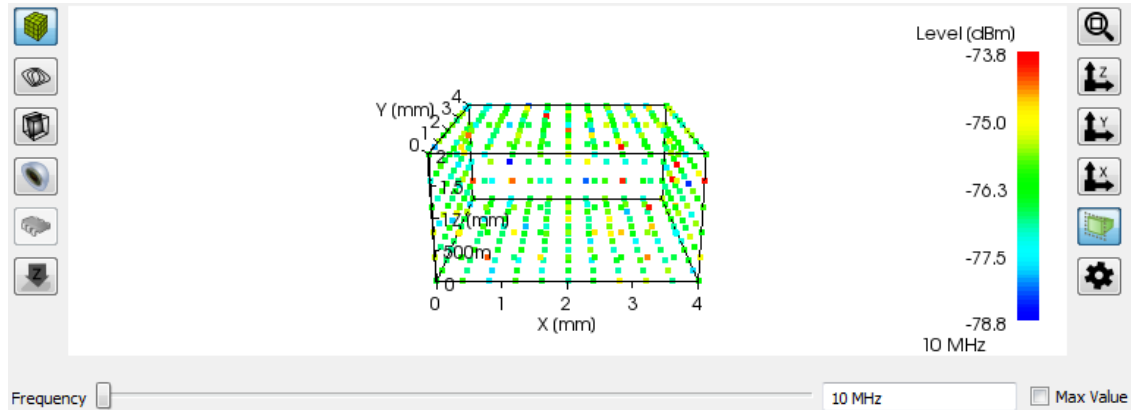


Figure 3.2.: Surface and volume scan visualization

In addition to these features you can add multiple visual properties. The visibility of these properties is controlled by the buttons on the right next to the visualization.

Points (📦): Show or hide each measurement point of the emission scan.

Contour plane (📏): Show or hide a freely positionable cut plane displaying contours.

Color plane (📏): Show or hide a freely positionable cut plane displaying colors.

Isosurface (📏): Show or hide isosurfaces.

Image (📏): Show or hide image of DUT.

Maximum intensity projection (📏): Project volume to x-y plane.

All properties make the qualitative analysis of EMC problems quick and easy especially for volume scans. For your convenience you can alter the size, number and opacity of the points, contours, isosurfaces and the DUT image using the properties dialog by pressing the ⚙️ button.

Furthermore, the visualization allows you to manipulate the view of all traces using your mouse. In the following all available mouse interactions will be explained in detail.


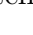

Navigation: To rotate the emission scan in any direction around the center of the scene move the mouse while holding down the left mouse key over the visualization. You may additionally hold down the CTRL key to rotate the scan around the projection axis only. Holding down the SHIFT key instead will move the scan along the projection plane. You can zoom in/out of the scan by spinning the scroll wheel and you can recover the full view range of the scan by pressing the 🔍 button on the right next to the visualization. For your convenience you can align the view along a specific axis using the 📏, 📏 or 📏 button. To switch between parallel and perspective view projection press the 📏 button.

Single trace analysis: When moving the mouse pointer over a specific measurement point of the emission scan a tool tip will appear showing the points' position and level. Furthermore, you will see the specific trace of this point in the trace visualization. To add any trace permanently do a right mouse click on the appropriate measurement point

and select **ADD TO TRACE VISUALIZATION** from the subsequent context menu. In this way you can easily compare the trace of any points of the emission scan against one another and even against a separate reference.

In addition the mouse context menu includes two other entries; **LOCAL MAXIMUM** and **GLOBAL MAXIMUM**. To search the trace's maximum level and switch the visualization to the appropriate frequency select **LOCAL MAXIMUM**. If you want to search all traces of the scan for the maximum level and switch to the corresponding frequency select **GLOBAL MAXIMUM**. When using the afore mentioned **MAX VALUE** mode the search of the particular maximum level is limited to the specified frequency band.

Pin and stripline scans

Each trace of the measured points is displayed perpendicular to the 1-dimensional line of measurement (see fig. 3.3). On the x- and the y-axis the frequency and the level is shown for a specific trace. The z-axis shows the trace's location according to the position on the 1-dimensional line of measurement. In addition to this data representation you may also generate a wireframe graphic connecting all traces next to each other by pressing the  button. To generate a solid surface representation press the  button and to switch back to the normal representation use the  button.

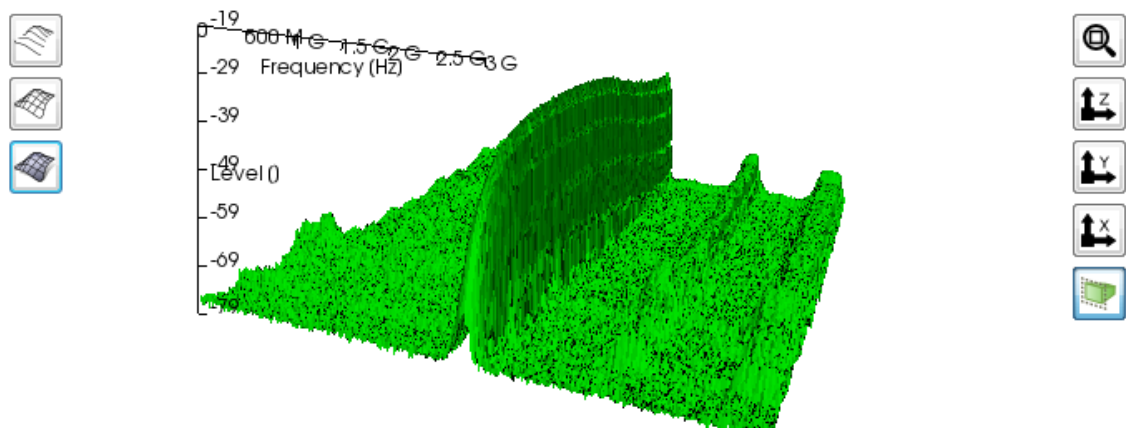
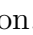
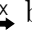
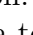
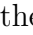



Figure 3.3.: Pin and stripline scan visualization



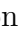
Furthermore, the visualization allows you to manipulate the view of all traces using your mouse. In the following all available mouse interactions will be explained in detail.

To rotate the emission scan in any direction around the center of the scene move the mouse while holding down the left mouse key over the visualization. You may additionally hold down the **CTRL** key to rotate the scan around the projection axis only. Holding down the **SHIFT** key instead will move the scan along the projection plane. You can zoom in/out of the scan by spinning the scroll wheel. Holding down the **SHIFT** key or the **CTRL** key while zooming will zoom the x- or y-axis only. To recover the full view range of the scan press the  button on the right next to the visualization. For your convenience you can align the view along a specific axis using the , , or  button. To switch between parallel and perspective view projection press the  button.

When moving the mouse pointer over a specific trace of the emission scan a tool tip will appear showing the points' frequency and level. Furthermore, you will see the trace in the trace visualization. To add any trace permanently do a right mouse click on it and select **ADD TO TRACE VISUALIZATION** from the subsequent context menu. In this

way you can easily compare the traces of the emission scan against one another and even against a separate reference.

3.2.2. Single traces

All traces and corrections currently activated in the trace manager are displayed in a Cartesian coordinate system in the lower part of the visualization (see fig. 3.4). In addition it shows the trace of any emission scan point currently selected by the mouse pointer. While the x-axis' unit of the trace visualization is fixed to Hz the y-axis' unit is not defined. This enables you to display traces with differing units as well as correction factors in the same diagram, making analysis very easy. In addition to the traces you can show a legend containing the annotations of all visible traces in the diagram by pressing the  button on the right next to the trace visualization. For reasons of usability and to prevent the legend from covering the whole diagram the length of text of all annotations is limited to thirty characters. Other visualization options are to adapt the zoom to view all traces, to preserve current zoom and to switch between a linear or logarithmic representation of the x-axis. All of these options can be controlled via the buttons ,  and **log** on the right side.

The visualization allows you to manipulate the view of all traces using your mouse. In the following all available mouse interactions will be explained in detail.

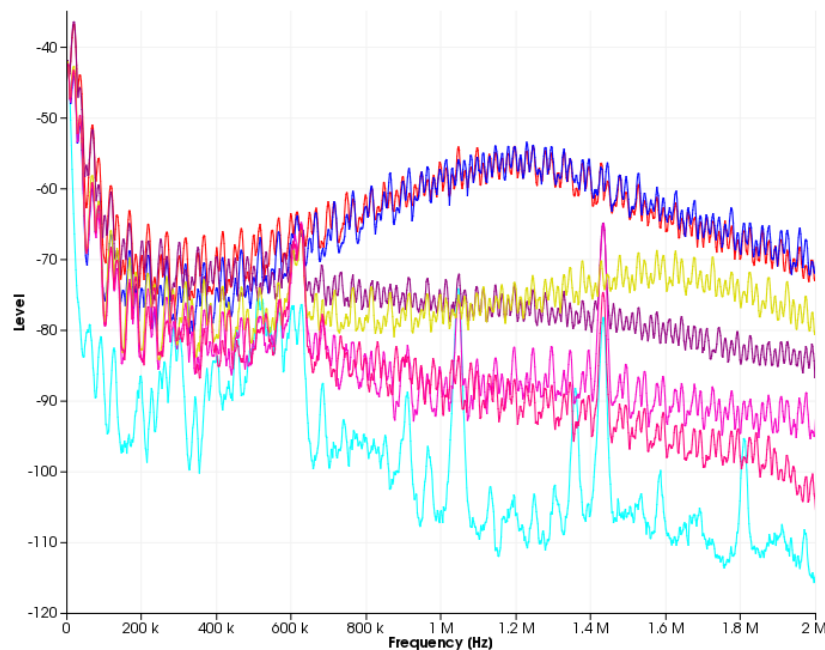
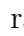


Figure 3.4.: Trace visualization

Navigation: All traces can be moved in all directions allowing you for example to center any points of interest for further investigation. To do so move the mouse pointer anywhere over the visualization, press and hold down the left mouse button, and move your mouse. While doing this the tic marks of the diagram will be updated automatically. Furthermore you can mark any trace points by pressing and holding down the right mouse button, and moving your mouse. Immediately a rectangle will be spanned to

indicate a selection frame. If you release the right mouse button all trace points within the frame will be selected. This is very useful to keep track of important points when navigating or zooming within the diagram.

Zooming: To zoom in or out within the diagram you just need to spin your mouse wheel forwards or backwards. If your mouse is lacking a wheel you can alternatively press and hold down the middle mouse button, and move your mouse up or down. For reasons of convenience you can hold down the SHIFT or the CTRL key while spinning the scroll wheel to zoom the diagram along the x- or the y-axis only. To recover the full view range of all visible traces press the  button on the right side. Using zoom in combination with moving traces you can analyze all interesting trace points in detail.

Trace analysis: When moving your mouse pointer over any trace point a tool tip will appear at the pointer showing the measured value including the units of the data point. This enables you to exactly determine the outcome of your countermeasures regarding a specific EMC problem. Please keep in mind that this tool tip information is not shown, if you point the mouse on a line between two trace points.

3.3. Data set manager

The data set manager lists name and type of all loaded emission scans and shows additional information like acquisition time and geometry of the currently displayed scan (see fig. 3.5). You can switch the visualization to show any emission scan by selecting the appropriate entry from the list on the left side of the data set manager. This will automatically update the emission scan information on the right side. You can also rename or delete an emission scan by right clicking on it and selecting the RENAME or DELETE entry from the context menu.

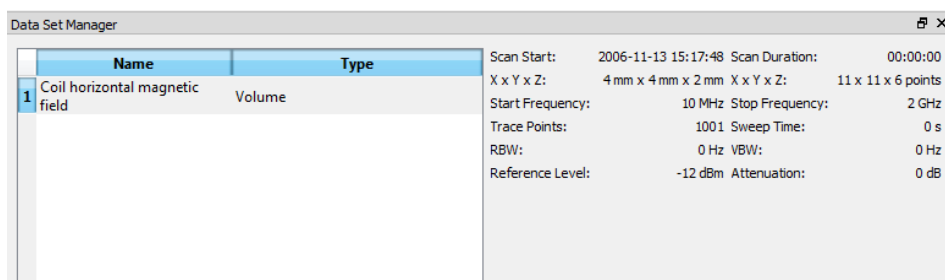


Figure 3.5.: Data set manager

For further trace analysis the context menu includes a COPY TO SINGLE TRACES entry which allows you to copy all traces of the selected emission scan to the trace visualization. We do not recommend to copy more than 1,000 traces¹ to the trace visualization. Depending on the performance of your GPU, ChipScan-Scanner might slow down a lot rendering it unusable. In addition you can also create a maximum trace by activating the GENERATE MAXIMUM TRACE entry in the context menu. This trace holds the level maxima of all traces of the emission scan.

For your convenience the context menu also includes an option to subtract a reference scan from any surface or volume scan. The only limitation to this option is that both

¹Each trace has 1,000 data points.

scans need to have the same geometry and their traces must have identical frequencies. By choosing **SUBTRACT REFERENCE...** from the context menu you can select a compatible reference scan from the subsequent dialog. This reference will be subtracted from the currently selected scan and the scan visualization will be updated automatically.

3.4. Device control

The device control (see fig 3.6) lets you initialize and control both a connected spectrum analyzer and a Langer IC-Scanner.

3.4.1. Spectrum analyzer setup

Before setting up a spectrum analyzer make sure you properly connected it to your PC and have it identified using the device manager.² In the following all properties are explained in detail. Keep in mind that none of the properties are transferred to your spectrum analyzer unless you press the **SET** button. Additionally, changes to properties done via the user interface of the spectrum analyzer are not transferred to ChipScan-Scanner. Therefore assume that the properties in the ChipScan-Scanner user interface and in the spectrum analyzer may be out of sync.

Frequency range: You can define the frequency range of measured traces by setting a center frequency and a span. Alternatively you can also define the range using a start and a stop frequency. To switch to this mode you need to select **START/STOP** from the **SPECTRUM ANALYZER** sub menu in the **SETTINGS** menu.

Reference level: You can set the reference level of the spectrum analyzer. The level can be defined either in dBm or in dB μ V. To switch between the units use the **UNIT** entry in the **SETTINGS** menu.

Attenuation: You can either manually set the attenuation of your spectrum analyzer in dB or let the spectrum analyzer set it automatically. The latter is achieved by unchecking the box of the **ATTENUATION** field.

Sweep time: You can either manually set the sweep time of your spectrum analyzer in seconds or let the spectrum analyzer set it automatically. The latter is achieved by unchecking the box of the **SWEEP TIME** field.

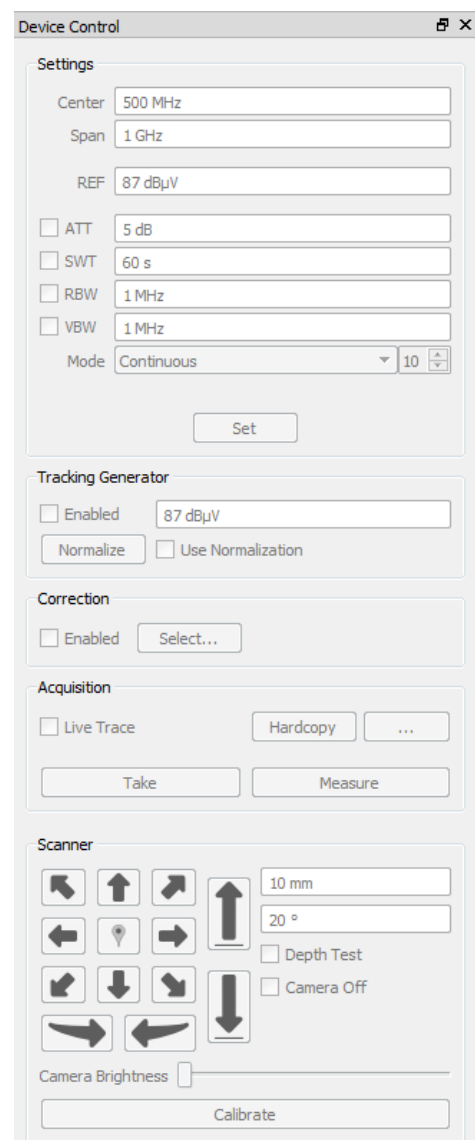


Figure 3.6.: Device control

²See section 4 for further information.

Resolution bandwidth: You can either manually set the resolution bandwidth of your spectrum analyzer in Hz or let the spectrum analyzer set it automatically. The latter is achieved by unchecking the box of the RES. BANDW. field.

Video bandwidth: You can either manually set the video bandwidth of your spectrum analyzer in Hz or let the spectrum analyzer set it automatically. The latter is achieved by unchecking the box of the VID. BANDW. field.

Mode: You can switch between the following modes of your spectrum analyzer; CONTINUOUS, SINGLE, AVERAGE, MINIMUM HOLD and MAXIMUM HOLD. If you selected the AVERAGE mode you must also define the number of traces to use to generate the average. Please see the manual of your spectrum analyzer for any details about these modes.

If you have finished to set all properties you must press the SET button to finally transfer the properties to your spectrum analyzer. Furthermore you can set the dB per division value of your spectrum analyzer using the dB/DIVISION entry in the SPECTRUM ANALYZER sub menu of the SETTINGS menu. To reset your spectrum analyzer to the default settings use the PRESET entry in the very same menu.

For reasons of convenience you can also store all properties for future use in a file. To do this use the SAVE SETTINGS... and LOAD SETTINGS... entries in the SPECTRUM ANALYZER sub menu from the SETTINGS menu. After loading old properties make sure to press the SET button to transfer them to your spectrum analyzer.

3.4.2. Spectrum analyzer normalization

Additionally to setting properties ChipScan-Scanner enables you to normalize your spectrum analyzer. This option is only available if your spectrum analyzer includes a supported tracking generator.

To normalize your spectrum analyzer you first need to set the output level of the tracking generator using the appropriate input field. The output level can be defined either in dBm or in dB μ V. To switch between the units use the UNIT entry in the SETTINGS menu. The second step is to enable the tracking generator by enabling the box to the right of the input field. The last step is to press the NORMALIZE button. Doing this the spectrum analyzer will generate a normalization that is applied to all following measurements. You can also enable or disable the normalization by checking or unchecking the box to the right of the NORMALIZE button.

3.4.3. Single trace acquisition and processing

To acquire traces from your spectrum analyzer ChipScan-Scanner provides two buttons, TAKE and MEASURE. When pressing TAKE ChipScan-Scanner just transfers and displays the trace which is currently located in the spectrum analyzer's memory. When pressing MEASURE ChipScan-Scanner initiates a new measurement in the spectrum analyzer and the resulting trace is displayed in the visualization.

Additionally ChipScan-Scanner includes a LIVETRACE feature. This will continuously transfer the trace from the spectrum analyzer's memory and display it together with all previously acquired traces. You can enable this feature by checking the box to the left of the TAKE button.

The trace processing in ChipScan-Scanner is split into three separate parts. Each of it can be controlled independently.

1. Normalization of spectrum analyzer
2. Application of correction factors
3. Application of mathematical operators

The normalization allows a preprocessing of traces directly within the spectrum analyzer.³ The application of correction factors is the first step in the post-processing pipeline. In this step all correction factors enabled via the trace manager will be applied automatically to any acquired traces. You can turn on or off the application of all corrections by enabling or disabling the box under the NORMALIZATION button. The second step in the post-processing pipeline is the manual application of mathematical operators via the trace manager. Please have a look at section 3.5 for all details.

3.4.4. Scanner movement

Before initializing and moving the scanner around make sure it is properly connected to your PC and have it identified using the device manager. On successful detection you need to start the calibration of the scanner.



Attention: Any of the following steps for scanner control may cause damage to any equipment and serious injuries or death to persons within the motion range of the scanner. Please proceed with caution while keeping all safety measures.

To calibrate your IC-Scanner press the CALIBRATE button in the scanner section of the device control. This will initialize the scanner and move all axes to their zero-point position.⁴ On success you can move the scanner around by setting the drive distance and the rotation angle in the appropriate input fields. Afterwards you can use any of the arrow buttons to change the scanners relative position. While the block of nine buttons is for horizontal movement⁵, the two buttons right next to the block control the vertical movement and the two buttons below the block control the rotation of the probe.

In case your Langer IC-Scanner has an integrated depth test, you can activate the DEPTH TEST box right next to the CALIBRATE button. If the scanner is moved downwards the integrated depth test continuously checks for a collision and therefore prevents any probe crash. In this mode the scanner moves a little slower downwards due to decelerate reasons in case of collision.

Additionally you can switch off/on the video camera directly connected to the scanner by checking/unchecking the CAMERA OFF box.

³see section 3.4.2 for details

⁴See the additionally provided scanner manual to determine this position.

⁵To store the current scanner position hold down STRG and press the central button and to move to the stored position just press the central button.

3.4.5. Video device usage

Before using the video device connected to the scanner make sure it is detected via the device manager. To view the current stream of the video device open the video view dialog (see fig. 3.7) by selecting the VIDEO entry from the DEVICES menu.

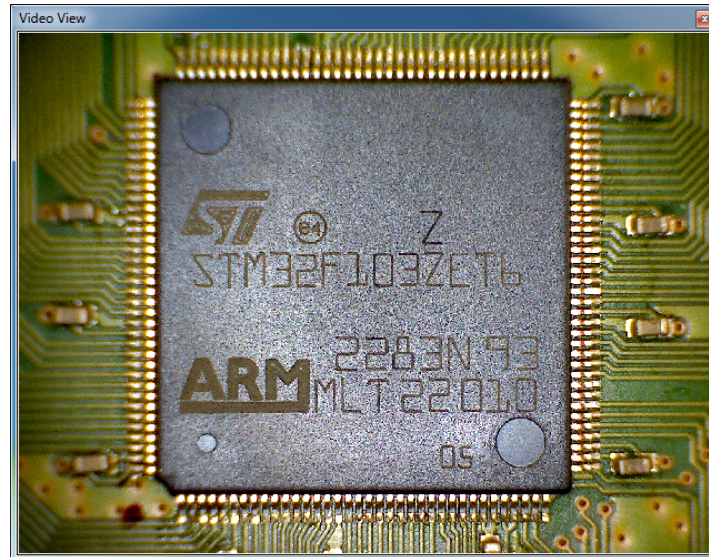


Figure 3.7.: Video View

The video view allows you to manipulate the video by right clicking on it and selecting multiple options from the subsequent context menu. You can rotate the video by either 90°, 180° or 270°. You can flip it horizontal or vertical and you can switch between a low and a high resolution mode. To zoom in or out of the video view you just need to spin your mouse wheel forwards or backwards.

3.5. Trace manager

The trace manager holds a list of all available single traces including corrections and shows their properties; visibility, color, x- and y-axis unit, annotation and comments (see fig. 3.8). Furthermore the trace manager provides all sorts of actions to manipulate spectrum analyzer traces. You can either alter the properties of a trace or you can change the data of a trace itself. To show the trace manager press CTRL+T or select the TRACE MANAGER entry from the WINDOW menu.

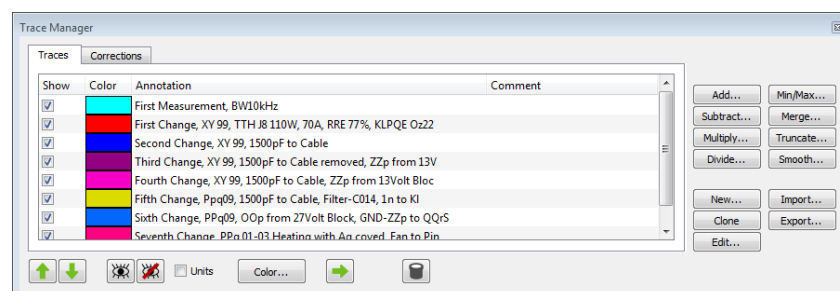




Figure 3.8.: Trace manager

3.5.1. Manipulation of trace properties

Visibility: You can alter the visibility of traces by selecting or deselecting the box in the SHOW column of the appropriate line in the trace manager. To show or hide multiple traces you need to select these traces in the trace manager and press /.

Color: You can change the color of a trace in the trace visualization by moving the mouse pointer over the appropriate colored rectangle in the COLOR column and pressing the left mouse button. In the subsequent color dialog select a new color and close the dialog.

Annotation and comment: To edit the annotation or the comment of a trace first select the appropriate line in the trace manager. Afterwards move the mouse pointer over the annotation or comment column and press the left mouse button. Now you can edit the highlighted string. Please keep in mind that the legend in the trace visualization displays only the first thirty characters of the annotation.

3.5.2. Manipulation of trace data

All actions to manipulate trace data are accomplished by pressing one of the buttons on the bottom of the trace manager. In the following the actions and the appropriate button icons are presented.

Addition, subtraction, multiplication, division: Any of these operators can be applied to a number of selected traces. For example if you press the ADD... button you can choose between three possibilities. You can add a constant to all selected plots, sum up all plots or add one of the selected plots to all other selected plots. Depending on your selection one or more new plots are generated and are appended to the end of the list of traces.

Min/Max: You can create a maximum or minimum trace from any number of selected traces. Doing so will generate a trace that contains the maximal or minimal value of all traces for each data point.

Merge: The merge operator will merge all of the selected traces into one trace. For example if two traces define two different frequency ranges the resulting trace will contain the data points of both traces. It might happen that multiple traces have overlapping frequency ranges. Therefore when merging the traces an additional dialog is shown where you can define the merge order of the traces. The data points of the trace with the highest merge order will be chosen when merging overlapping frequency ranges.

Truncate: You can truncate any number of data points from the start or the end of a trace by defining a new frequency range. Doing so will generate a new trace with all data points lying within the specified frequency range.

Smooth: You can smooth the data of a trace by applying a moving average filter with a specific width. Doing so will generate a new smoothed trace.

Clone, delete (🗑️): You can clone any number of selected plots. This will generate a copy of each of the selected plots in the trace manager. You can also delete any number

of plots. This will permanently remove all selected plots from the trace manager.

New, edit: You can create a new trace and you can also edit any existing trace. When pressing the appropriate button of either of these operations a subsequent dialog enables you to manage all data points of a specific trace (see fig. 3.9). You can insert new points by providing a x- and a v-value, and you can change and delete any number of existing points. Furthermore you can convert both the x- or the v-values of a trace to a new unit, if there exists a specific conversion. You can also assign a new x- or y-unit to any trace. This will leave the values of the trace unchanged. If you finished all manipulations to data points make sure to press the OK button to apply all changes. Pressing the CANCEL button will abort the operation.

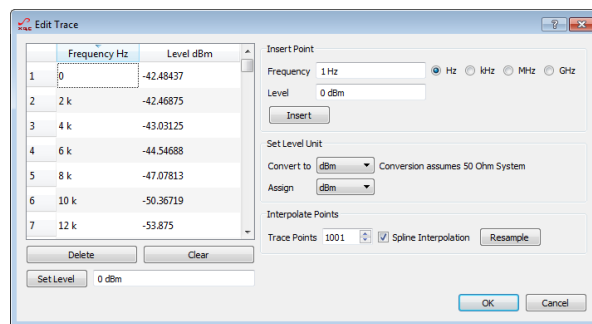


Figure 3.9.: Dialog to manipulate data points of a trace

Import, transfer(→): You can import any number of corrections which are stored in special files having a .csc suffix. By pressing the IMPORT... button a file dialog opens where you can select a file containing corrections.

3.6. Log

The log collects all additional information on errors, warnings or other output which may occur during the run of ChipScan-Scanner. To show the log press CTRL+L or select the LOG entry from the WINDOW menu. While log information is not important for the user to know it sometimes can be helpful to analyze device communication errors or other complex problems. So if you encounter any problems when running ChipScan-Scanner we recommend to read all information in the log before contacting our support. Doing so makes the process of identifying the source of your problem a lot easier. Sometimes we may also ask you to send us all log information to exactly reproduce your problem and eliminate it.

4. Managing devices

All devices supported by ChipScan-Scanner are managed via the device manager. In general it enables you to detect all connected spectrum analyzers as well as the connected Langer IC-Scanner and to select one of them for your subsequent measurements.

4.1. Device detection

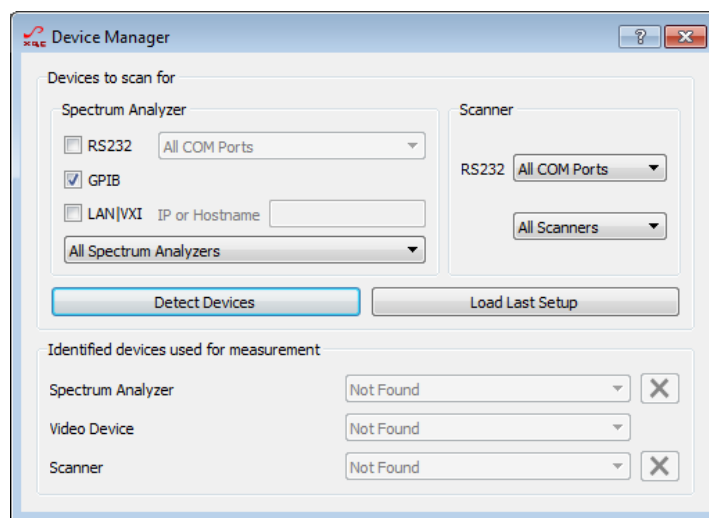


Figure 4.1.: Device manager of ChipScan-Scanner

4.1.1. Device Interfaces

Spectrum analyzer By default only spectrum analyzers connected via GPIB will be detected automatically because it is the most common connection type. If you are using RS232 or LAN/VXI for connection you explicitly need to select the appropriate interface in the device manager to detect your spectrum analyzer. Make sure to disable any unused connection type to shorten the time required for detection.

When connecting via RS232 you can additionally provide the specific RS232 port your spectrum analyzer is connected to. This is especially useful to reduce the detection time, if your computer has lots of RS232 ports.¹ When connecting via LAN/VXI you must provide the IP address or the appropriate hostname of your spectrum analyzer. Please study your spectrum analyzer manual to gain the required information.

IC-Scanner All of Langer IC-Scanners are controlled via RS232. So actually you do not need to change the interface settings at all. But to reduce detection time significantly you can select a specific RS232 port where your scanner is connected to.

¹This includes all virtual RS232 ports whose number can be high.

Video camera The video device of your scanner is identified automatically.

If you set all interface properties please press the DETECT DEVICES button to identify your devices.

4.1.2. Manual detection

In case of detection problems with a device you can also set all connection information manually. To do this for spectrum analyzers select your model from the drop down list and set all connection information regarding the interface in the fields above. For IC-Scanners you just need to select the model and specify the RS232 port. If you set all interface properties please press the DETECT DEVICES button to identify your device.

4.1.3. Last setup

Whenever you close the device manager dialog the current device setup will be automatically stored, making it usable for future measurements. So if you open ChipScan-Scanner again you can use the last setup to detect your connected devices without setting the interface information. To do this select LOAD LAST SETUP... in the DEVICES menu or open the device manager and press the LOAD LAST SETUP... button.

4.2. Device selection for measurement

If the detection of devices was successful they will be added to drop down lists in the lower part of the device manager. When only one device is found it will be used automatically for the next measurements. When for example multiple spectrum analyzers are found you need to select one of them to be used for subsequent measurements. Keep in mind that you can always switch between multiple devices during your measurements.

4.3. Identifying device communication problems

All drivers for the different supported devices in ChipScan-Scanner are intensively tested. If you encounter any problems regarding your device please contact us by writing to software@langer-emv.com. But before contacting us make sure to read the following lines carefully. This may solve your problem right away.

If unable to detect a device When your device can not be detected by ChipScan-Scanner first make sure it is included in the list of supported devices (see appendix A). Then check if it is properly connected to the computer. If this is the case please use any software provided by the device manufacturer to make sure the connection between the device and your computer works. If this connection test was successful please deactivate (close) all software that might interfere with the communication between ChipScan-Scanner and your device. Especially device manufacturer software for device control or software for logging the communication over the interface are sources for errors. You may also try to perform a manual detection of your device using the device manager.

On errors during measurement If the error only occurs once please repeat your measurement. If the error occurs sporadically or continuously please deactivate (close) all software that might interfere with the communication between ChipScan-Scanner and your device. If the error persists please close and reopen ChipScan-Scanner. It might also help to restart your computer.

5. Acquisition and management of emission scans

ChipScan-Scanner allows the quick configuration and reliable execution of surface and volume emission scans using one of Langer's IC-Scanners. To acquire new emission scans or view the results of former scans open the scan manager by selecting the SCAN MANAGER entry from the WINDOW menu.

5.1. Scan setups

Before you can execute an emission scan a setup has to be created. The setup contains amongst general scan information, the dimension of volume to scan and the actions to perform during the scan. All the information will be included in a scan report which is created after a scan is finished. Once you created a setup you can reuse it at later time to perform the scan again with identical properties.

You can create (+), remove (-) and edit (⚙️) setups by using the appropriate buttons on the right side of the scan manager's setup section (see fig. 5.1).

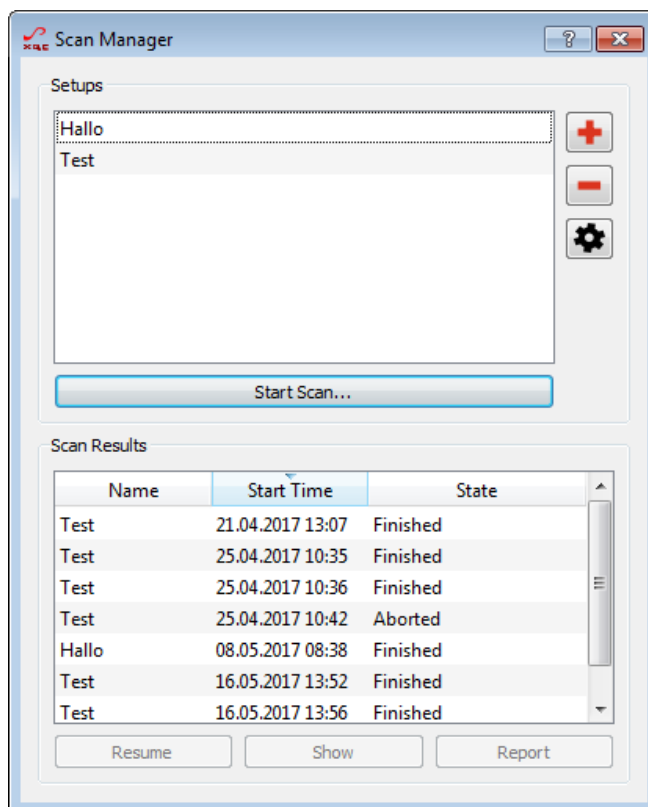


Figure 5.1.: Scan Manager

Creating a new setup or edit an existing setup will open a subsequent dialog (see fig. 5.2) where you can alter the specific properties of an emission scan. The different properties of an emission scan are categorized by the following sections.

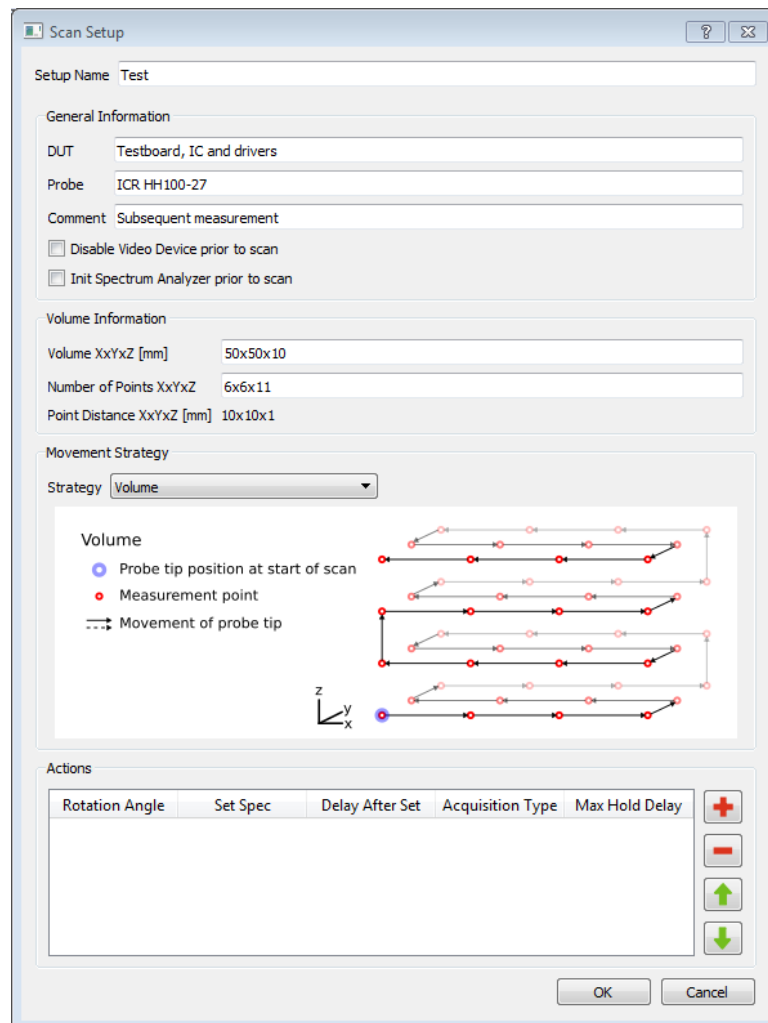


Figure 5.2.: Emission Scan Setup

5.1.1. General information

The GENERAL INFORMATION section enables you to describe all general properties of the emission scan setup like DUT's name, the probe's name and so on.

In addition you can specify to switch off the video device before starting the scan by checking the appropriate checkbox. This is especially useful to further reduce the noise level during an emission scan.

You can also specify common spectrum analyzer properties, which are set in the device every time you start a scan. This enables you to repeat a scan with the exact same spectrum analyzer properties at any time. To do so check the INIT SPECTRUM ANALYZER PRIOR TO SCAN checkbox and set the properties in the subsequent dialog.¹

¹In the dialog, to set specific values to properties (attenuation, sweep time, ...) you need to check the appropriate checkboxes

5.1.2. Volume information

For each emission scan setup the volumetric grid needs to be described. The grid is given by the x,y,z-dimension of the scan volume and the number of measurement points for each axis, where the x-axis corresponds to left-right movement, the y-axis to forth-back movement and the z-axis to bottom-top movement.

5.1.3. Movement strategy

The order, in which the measurement points are approached, is subject to this section. The following two strategies are available.

Volume The probe is moved along x,y and z axes without any collision detection starting from the probe position at scan start.

Volume with vertical collision detection The probe is moved along vertical columns starting from the probe position at scan start.² First the probe is moved to highest point of a vertical column. Afterwards the probe is moved downwards till the lower base area of the volume while the collision detection device continuously checks for a collision³. If a collision is detected before reaching the lower base of area of the volume the probe is move to the highest position of the next vertical column.

If the probe can not be moved vertically to the lower base area at scan start you can add a VERTICAL OFFSET BETWEEN THE PROBE TIP AND LOWER BASE AREA for compensation.

In case any component parts of your circuit within the scan volume tower over the upper base area of your specified volume you may add a VERTICAL OFFSET BETWEEN SAFTY PLANE AND THE UPPER BASE AREA to prevent damaging your probe.

5.1.4. Actions

When the scanner reaches a point on the volumetric grid, it will execute a list of actions which you can specify in the ACTIONS section. You can create as many actions as you want. For example you can rotate a near field probe several times at one point and measure a trace at each angle.

In addition an action contains the following set of sub actions which can be enabled separately and are executed in the given order.

1. Rotate the probe to a specific angle
2. Set properties in the connected spectrum analyzer
3. Wait for some time after setting the properties in the spectrum analyzer
4. Acquire a trace using the connected spectrum analyzer

²This movement strategy is only available if your Langer IC-Scanner has an integrated vertical collision detection device.

³The collision detection is only applied when the probe is moved to a position lower than the safety plane.



Attention: Keep in mind that rotating the probe by more than 180 degree may damage the cable connection. Ensure to rotate only ± 180 degree from the origin.

5.2. Emission Scan Acquisition



Attention: Any of the following steps for scanner control may cause damage to any equipment and serious injuries or death to persons within the motion range of the scanner. Please proceed with caution while keeping all safety measures.

To start a new scan you need to select a specific setup and click on the START SCAN button. This opens a subsequent dialog (see fig. 5.3) which shows some progress information.

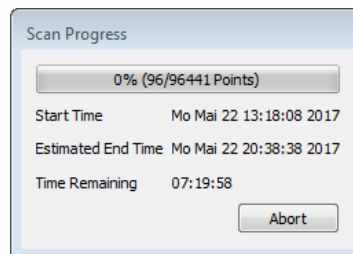


Figure 5.3.: Emission Scan Dialog

Whenever abort a scan you can always resume it in the scan manager user interface by selecting the scan from the SCAN RESULTS section and pressing the RESUME button (see fig. 5.1).

5.3. After emission scan acquisition

At the end of each emission scan a scan report is automatically generated. To view the report press the REPORT button in the SCAN RESULTS section of the scan manager. The report will be opened in your default PDF viewer and shows a maximum intensity projection of the emission scan among all other information provided in the scan setup.

If the acquisition is finished use ChipScan-Scanner to do your analysis on the scanned data. In addition you can open older scans by selecting any scan from one of your setups and press the SHOW button in the SCAN RESULTS section of the scan manager. Be aware when opening any emission scan that all currently loaded data will be closed before.

To delete any scan or setup just select it and hit the DELETE button in the scan manager interface. Be aware deleting a scan or a setup is irreversible.

6. Frequently asked questions

6.1. Windows 7 and artifacts within the visualization

If you encounter any artifacts within the visualization and you run ChipScan-Scanner on a Windows 7 system please change your current display theme to an aero theme.

Detailed description: The following artifacts have been reported within the visualization.

- switching between full screen and windowed mode of the application causes artifacts in the traces visualization
- dragging the video view over the application causes the trace visualization to stop updating the live view
- when zooming in the visualization only parts of it will be updated

6.2. Langer ICS 105 is not detected in device manager

Due to a power loss or other failures the connection between your computer and the Langer ICS 105 might be disrupted while ChipScan-Scanner runs. Detecting the Langer ICS 105 again in ChipScan-Scanner fails also if the virtual Trinamic TMC6110 COM device is registered in the MS Windows' device manager. If this happens please follow the steps below to solve the problem.

1. close ChipScan-Scanner
2. unplug and replug the USB cable connecting the ICS 105 with your computer
3. reopen ChipScan-Scanner
4. detect Langer ICS 105

A. Supported spectrum analyzers

The following lists contain all spectrum analyzers supported by ChipScan-Scanner, the appropriate supported interfaces (RS232, GPIB¹, Ethernet), the firmware version and additional important notes regarding the specific model. If you do not find your spectrum analyzer in the list please contact our sales team for available options using the following email address mail@langer-emv.com.

We are making great efforts to develop our drivers and testing them intensively. Due to different available firmwares for specific spectrum analyzer models we can not guarantee to 100 percent that all spectrum analyzers in these lists are working without any errors.

Meaning of icons are: ✓ driver fully tested, ⚠ driver in test phase.

Advantest

Model	RS232	GPIB	Ethernet	Firmware	Notes
R3131		⚠			
R3131A		✓			
R3132		✓			
R3272		✓			no hardcopy
U3741		✓			
U3751		✓			
U3771		✓			
U3772		✓			

GW Instek

Model	RS232	GPIB	Ethernet	Firmware	Notes
GSP9300B			✓		no hardcopy, no tracking generator
GSP9330			✓	V3.0.0.6	no hardcopy, no tracking generator

Keysight (former Agilent)

Model	RS232	GPIB	Ethernet	Firmware	Notes
E4401B		✓			ESA-E series
E4402B		✓			ESA-E series
E4403B		✓			ESA-L series
E4404B		✓		A.07.05	ESA-E series

¹NI GPIB only, Agilent GPIB not supported.

Model	RS232	GPIB	Ethernet	Firmware	Notes
E4405B		✓			ESA-E series
E4407B		✓			ESA-E series
E4408B		✓			ESA-L series
E4411B		✓			ESA-L series
E7401A		✓		A.02.00	EMC series
E7402A		✓			EMC series
E7403A		✓			EMC series
E7404A		✓			EMC series
E7405A		✓		A.14.04	EMC series
N9000A		✓	✓	A.07.06	CXA series
N9000B		✓	✓	A.20.18	CXA series
N9010A		✓	✓	A.14.06	EXA series
N9010B		✓	✓	A.19.55	EXA series
N9020A		✓	✓	A.10.52	MXA series
N9020B		✓	✓	A.25.08	MXA series
N9021B		⚠	⚠		
N9030A		✓	✓	A.07.04	PXA series
N9038B		⚠	⚠		
N9320B			✓	0B.03.43	no hardcopy, no preset, no uncal

Rigol

Model	RS232	GPIB	Ethernet	Firmware	Notes
DSA815			✓	00.01.08.00.03	slow data acquisition

Rohde & Schwarz

Model	RS232	GPIB	Ethernet	Firmware	Notes
ESL3			✓	1.83 SP4	
ESL6			✓		
ESPI3		✓			no tracking generator yet
ESPI7		✓		4.42	no tracking generator yet
ESR3		✓	✓		no tracking generator yet
ESR7		✓	✓	2.27 SP1	no tracking generator yet
ESR26		✓	✓		no tracking generator yet
ESRP3		✓	✓		no tracking generator yet
ESRP7		✓	✓	2.26	no tracking generator yet
ESU8		✓	✓	4.43	hardcopy via GPIB only, no tracking generator yet

Model	RS232	GPIB	Ethernet	Firmware	Notes
ESU26		✓	✓		hardcopy via GPIB only, no tracking generator yet
ESU40		✓	✓		hardcopy via GPIB only, no tracking generator yet
ETL3		✓	✓	1.73	
FPC1000			✓		VXI via USB supported
FPC1500			✓		no tracking generator yet
FPL1003		✓	✓	1.51	
FPL1007		✓	✓	1.51	
FPL1014		⚠	⚠		
FPL1026		⚠	⚠		
FSEK30		✓		3.40.2	
FSH4			✓		no tracking generator
FSH8			✓	V2.50	no tracking generator
FSH13			✓		no tracking generator
FSL3		✓	✓	2.00 SP2	
FSL6		✓	✓	1.80 SP1	
FSL18		✓	✓	1.80 SP1	
FSP3		✓	✓		
FSP7		✓	✓	4.50	
FSP13		✓	✓	2.80	
FSP30		✓	✓		
FSP31		✓	✓		
FSP40		✓	✓		
FSU3		✓	✓		no tracking generator yet
FSU8		✓	✓		no tracking generator yet
FSU26		✓	✓	4.37	no tracking generator yet
FSU31		✓	✓		no tracking generator yet
FSU32		✓	✓		no tracking generator yet
FSU43		✓	✓		no tracking generator yet
FSU46		✓	✓		no tracking generator yet
FSU50		✓	✓		no tracking generator yet
FSU67		✓	✓		no tracking generator yet
FSUP8		✓	✓		
FSUP26		✓	✓	4.37	
FSUP50		✓	✓		
FSV3		✓	✓	1.50	

Model	RS232	GPIB	Ethernet	Firmware	Notes
FSV4		✓	✓		
FSV7		✓	✓		
FSV13		✓	✓	1.50	
FSV30		✓	✓		
FSV40		✓	✓		
FSW8		✓	✓		
FSW13		✓	✓		
FSW26		✓	✓	4.30 SP1	
FSW43		✓	✓		
FSW50		✓	✓		
FSW67		✓	✓		
FSW85		✓	✓		
HMS-X			✓	SW02.250	no tracking generator yet, analyzer is sometimes not recognized by the device search at the first attempt
MXO4			✓		live trace works reliably only for RBW >100 Hz
MXO44			✓	1.2.3.2	live trace works reliably only for RBW >100 Hz
RTO1002			✓		FFT on MATH1 channel
RTO1004			✓		FFT on MATH1 channel
RTO1012			✓		FFT on MATH1 channel
RTO1014			✓		FFT on MATH1 channel
RTO1022			✓		FFT on MATH1 channel
RTO1024			✓	2.40.1.1	FFT on MATH1 channel
RTO1044			✓		FFT on MATH1 channel

Tektronix

Model	RS232	GPIB	Ethernet	Firmware	Notes
RSA6106A		✓	✓		no hardcopy
RSA6114A		✓	✓	FV:2.1.0098	no hardcopy
RSA6120A		✓	✓		no hardcopy